

Super's Signal

A publication of Division 6, Mid Central Region of The National Model Railroad Association, Inc.

June 2020

Late-Breaking Announcements

Matt Goodman, *Division 6 Super*
In-Person Meeting Updates

The June Marion meeting has been canceled. At this time this is being written, we are assuming there will be no in-person meeting in July, either. Incoming Assistant Superintendent Dexter Hill is looking for locations for in-person meetings in August and September if larger gatherings are approved by then.

Virtual Meetings

The outgoing and incoming Boards of Directors discussed using Zoom! virtual meeting software for our June and July meetings. We want your feedback on this; I posted a survey link via MailChimp and our [NMRABuckeyeDivision Groups.io group](https://www.nmrabuckeyedivisiongroups.io). Please look for the email in your inbox and fill out the two-question survey.

At least three divisions in the region are already using virtual meetings, as are RPM and Operations-focused special interest groups. All have reported great success. If we move forward with this, there is the possibility of using the technology for other purposes to enhance the benefits to our members.

Division 6 in Facebook:
NMRA Buckeye Division [in search field]

Division 6 Email Group:
NMRABuckeyeDivision@groups.io

Division 6 on YouTube:
www.youtube.com/user/nmrabuckeyedivision

19 June Contest Entries Closes Virtual Photo Contest-3

Virtual Photography Contest: Favorite Train.

20 June Contest Entries Voting

20 June

Zoom video call - see your email for details or contact Matt at Super@Div6-MCR-NMRA.org

Clinic: *Getting Started (or Improving) Operations on Your Layout*, Mike Wolf, MMR

Video: Coschocton Model RR Club

Featured in the July 2020 Model Railroader, the HO scale Toledo, Walhonding Valley & Ohio fills a 50 x 150 building with a freelanced layout inspired by scenes of southern Ohio. The impressive model railroad was built and is operated by the Associated Model Railroad Engineers of Coshocton, Inc. The layout's control system features a vintage working interlocking machine. Check out the action in this short video. [Video [Link](#)]



Super' Signal Deadline
25 June

DIVISION 6 OFFICERS**Division 6 Superintendent**

Matt Goodman: 30 S. Algonquin Ave

Columbus, Ohio 43204

Super@Div6-MCR-NMRA.org

Div. 6 Assistant Superintendent

Dexter Hill:

AssistSuper@Div6-MCR-NMRA.org

Division 6 Clerk

Carter Jastram:

DepClerk@Div6-MCR-NMRA.org

Division 6 Pay Master

Jim Borcz:

Paymaster@Div6-MCR-NMRA.org

Directors

Donald Wilke,

Mike Wolf, MMR:

Director@div6-mcr-nmra.org

APPOINTED CHAIRS

Achieve. Program: Dick Briggs,

MMR

Contest: Jim Ruisinger

Media: Matt Goodman

Members Aid: Available

Membership: Rick Brown

Program: Mike Wolf, MMR

Raffle: Harry "Butch" Sage

Division 6 io.Group: Jim Ruisinger

Web Master: Don Wilke

Super's Signal Pub.: Don Wilke

SuperSignalPub@div6-mcr-nmra.org

DIVISION 6 WEB SITE:

www.div6-mcr-nmra.org

Mid Central Region President:

Bob Weinheimer

president@midcentral-region-nmra.org

NMRA Central District Director:

Robert Beaty, MMR

Non-Credited Photos by Donald Wilke

Clerk's Special Election Report

Patrick Hreachmack, Clerk

**Buckeye Division 6,
Mid Central Region, NMRA, Inc.**

May 27, 2020

This year's Buckeye Division 6 annual elections have been partly dis-railed by the Covid 19 Epidemic Crisis. This resulted in all voting for our current slate of officers to be available to the membership via an election ballot with a mailed hard copy of the *Signal*. The reverse side of the ballot carried the snail mail address of each member in good standing. Members were instructed to cut out the ballot, fill it in, and return the ballot to Butch Sage, Division 6 Inspector of Elections.

At the end of the ballot submission period, the following ballots were received and tallied:

Ballots received by mail:	8
Ballots hand delivered:	19
Total ballots received:	27
Ballots voided:	1
Ballots counted:	26

The official election results are:

Superintendent:	Matt Goodman:	26 votes
Asst. Superintendent:	Dexter Hill:	26 votes
Clerk:	Carter Jastram:	26 votes
Paymaster:	Jim Borcz:	25 votes

Per our Division 6 By-Laws, the election results go to the current Board of Directors for ratification and official acceptance. The Board of Directors then issues instructions to the Division 6 Inspector of Elections that the ballots may be destroyed.

To date five of the Board of Directors have indicated their approval for acceptance of the election and subsequent destruction of the ballots.

At this point, the 2020 Buckeye Division 6, Mid Central Region election is hereby finalized.

Congratulations to our incoming officers.

Respectfully Submitted in accordance with current Buckeye Division 6 By-Laws,

Patrick Hreachmack, Buckeye Division 6 Clerk

RAILROAD RESEARCH CDs/DVDs

Butch Sage

I recently stumbled across an item on Ebay that I found of great interest, Railroad Research CDs/DVDs. These are being produced by Don Hensley, who operates under the name Taplines. I purchased two of his CDs, those being the *East Broad Top* and the *Maine Two Foot Railroads*. The information, which varies by railroad, includes maps, Official Guide listings, Official Equipment Register listings, Moody's and Poor's Manuals listings and other items, all in PDF format. He lists over 40 titles, many are southern short lines, but there are also major carriers. A lot of information for a small price. CDs are \$15 and DVDs are \$20 including postage and there is a discount for purchasing multiple items. I fully intend to purchase a few more down the road.

You can find more information on these CDs/DVDs, as well as his photographs and other items, at <http://www.taplines.net>, including a link to Don's Ebay store.

Division 6 – 2020 Time Table

Date	Event	Meeting	City
4-5 Jan	Great American Train	Fairgrounds	Columbus
12 Jan	Division 6 Meeting	Business Meeting: <i>Hilltop Library</i> Clinic: <i>Static Grass Applicator</i> , Darrell Logan & Rich M9 Contest: Open Freight Car WITH Load	Columbus
16 Jan	<i>Super's Signal Deadline</i>		
9 Feb	Division 6 Meeting	Business Meeting: <i>South-East Library</i> Clinic: <i>Weathering Cars</i> , Matt Goodman & Mike Wolf Contest: Non-Revenue Car	Groveport
14 Feb	<i>Super's Signal Deadline</i>		
8 March	Division 6 Meeting	Business Meeting: <i>Smoke Stack Hobbies</i> Clinic: <i>Wiring & Automation</i> , William Morgan Contest: Non-Steam Locomotive	Lancaster
12 Mar	<i>Super's Signal Deadline</i>		
19 Apr	Meeting Canceled Division 6 Meeting	Business Meeting: <i>Zanesville Club</i> Clinic: <i>Developing Operating Sessions</i> , Mike Wolf, MMR Virtual Contest #1: Line-Side Railroad Structure	Zanesville
23 Apr	<i>Super's Signal Deadline</i>		
17 May	Virtual Photo Voting	Virtual Contest #2: Signals	.io-group
23 May	<i>Super's Signal Deadline</i>		
28–31 May	Convention Canceled Virtual Meeting	<i>Virtual Contest #3: Favorite Train</i>	Pittsburgh, Pa
20 Jun (Saturday)	Virtual Meeting on Zoom Division 6 Meeting	Business Meeting: Zoom Clinic: <i>Getting Started (or Improving) Operations on Your Layout</i> , Mike Wolf, MMR Virtual Photo Contest #3: Favorite Train	.io-group
25 Jun	<i>Super's Signal Deadline</i>		
8 Aug	Division 6 Meeting	Business Meeting: <i>TBD</i> Clinic: <i>TBD</i> Model Contest: <i>Thumbs Up (Humorous Whimsical stuff)</i> Photo Contest: <i>Railroad Derelicts & Wrecks</i>	Marion
Aug	<i>Super's Signal Deadline</i>		
Sep	Division 6 Meeting	Business Meeting: <i>TBD</i> Clinic: <i>TBD</i> Model Contest: Steam Locomotive with Caboose Photo Contest: Steam Locomotive	TBD
Sep	<i>Super's Signal Deadline</i>		
Oct	Division 6 Train Show	Business Meeting: NONE Clinic: NONE Contest: NONE	Cambridge
Oct	<i>Super's Signal Deadline</i>		
Nov	Division 6 Meeting	Business Meeting: <i>TBD</i> Clinic: TBA Contest: Closed Freight Car	TBD
Nov	<i>Super's Signal Deadline</i>		
Dec	Division 6 Meeting	Business Meeting: TBD Clinic: <i>TBD</i> Contest: Passenger Car	TBD
Dec	<i>Super's Signal Deadline</i>	<i>Election Issue</i>	

Contest Report

Jim Ruisinger, Contest Chair

“Virtual” Contest-2 Re-Cap May 2020 via the Internet

We had another great turnout of photos for our Second EVER virtual contest. Nine members submitted a total of 21 very nice photos for consideration via email, for a “Virtual Photo Contest”. We had some really cool photos too! Photos were put on special page of the Division’s website for everyone to vote on them. That’s equal to or better than the turnout when we meet in person!

Congratulations to our winners. We will have certificates for you at our next opportunity to hold a Division 6 meeting where we can gather, in person, which will hopefully be in Marion. Whether we meet in person in Marion or not, our subject matter will be “Favorite Train” Keep an eye on our Facebook Page, Website and email lists for updates on Marion. The cumulative point totals for Modeler and Photographer of the Year appears elsewhere in the *Super’s Signal*.

Direct any questions to:

Contest Chairman, Jim Ruisinger.

(614) 440-8962 Jimbo2490@yahoo.com

Announcing Our 3rd Ever Virtual Contest

Here we are yet again, forced to re-arrange our schedule due to the COVID-19 limitations of social distancing and limits on crowd size. Our June meeting in Marion has been tentatively rescheduled for August 8th, but we’re still going to hold our June contest THIS month. Our subject matter is as it would’ve been if we were meeting in person. Favorite Train. Your photos can be of a prototype or a model. I know that when we go out and take pics of the prototype, we tend to zero in on the motive power end of the train. Please try to include as much of the train as you can, all of it if possible. If you’re taking pics of models, you should be able to get all or most of the train in your sights.

Email all photos to: NMRABuckeyeDivision@groups.io the group email does allow photo attachments. That way, everybody will get to see them. Don will also pull the photos and place them on special

Subject: Railroad Signals. Entries ranged from Block Control to Train Order Semaphores, to Grade Crossings to overhead Signal Bridges

Model: None

Photo:

1st Place: Dave Richter – Signal Bridge being repaired as the Turbo Train passes underneath

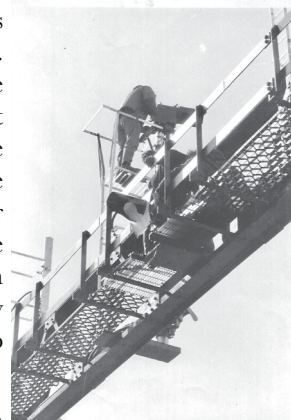
2nd Place: Dave Richter – Signal Bridge from the rear of the Amtrak Starlight, near Kelso, WA

3rd Place: Don Wilke – NS Northbound Signal 117 at Control Point–Flint

page on our website for contest photos so you should be able to see them there. There will be a link on the Home Page to click on to take you to the contest photo page. That way they can all be seen at the same time and will be numbered to allow you to vote for your favorite. All photos need to be submitted by midnight, June 19th (Friday). That means you have plenty of time to come up with something to enter.

Voting will be on Saturday, June 20th via email to contest Chairman Jim Ruisinger at Jimbo2490@yahoo.com. You may also click on the email contest chairman link and email Jim that way.

Voting will end at 6pm Saturday the 20th. Winners will be announced in an email to the group on Sunday. Not sure when we’ll all be able to gather in person again but we’re aiming for August 8th, so keep your fingers crossed. We may not be real happy about no ‘in-person’ meetings, but it’s probably wise for us to be cautious since most of us are in that over 60 higher risk category. Let Jim know if you have any questions. Let’s make this work and have some fun with it.



1st Place Photo –
Dave Richter
Signal Bridge being
repaired

Contest Point Summary May 2020

Jim Ruisinger, Contest Chair

Modeler

Steve Hurt	9	Dan Dennis	1
Pat Hreachmack	5	Bob Doerflein	1
Jerry Hurt	4	Alan Evens	1
Howdy Lamprecht	4	Connie Frazze	1
Richard Matejovic	4	Matt Goodman	1
Peggy Doerflein	3	Bill Hanna	1
Darrell Logan	3	Bob Lee	1
Greg Short	3	Judy Logan	1
Jim Borecz	2	Harry Sage	1
Jim Ruisinger	2		

Photographer

Matt Goodman	12	John Baker	1
Don Wilke	11	(By way of Jack Brown)	
Dave Richter	6	Dick Briggs	1
Jim Ruisinger	5	Peggy Doerflein	1
Jerry Hurt	4	Steve Hurt	1
Richard Matejovic	4	Carter Jastram	1
Jim Borecz	2	Jim Oberst	1
Howdy Lamprecht	2	Jerry Severson	1
Bruce McDonald	2	Greg Short	1
Harry Sage	2		

Membership End of the Month Report May 2020

Rick Brown, Membership Chair

Summary/Comments

First, we should all stop for a second and offer our thanks to Matt Goodman, who has served as the Membership Chair for the Buckeye Division for a long time. I really don't know how long....longer than I've been here. He has done excellent work for our division, and I can report the processes and precedents he has set up for me are excellent. I, for one, am grateful for his help in this transition. As he begins his service as our Division 6 Superintendent, we can all take heart that he will tackle these new tasks with the same commitment and excellence. Thanks Matt. Job well done!

I saw a really fun, and funny, meme about this shutdown period. As model railroaders staying at home for the last 10 weeks....we've been preparing for this all our lives! I have had many model railroad projects on my workbench

during our stay home time. My trackwork has improved, I have many new structures completed, and I have done a lot of electric work. I even worked on a large project for my club....and completed it! But, I feel like I thought I would have gotten more done. Well, maybe over the long weekend and another week or so....but I always feel that way.

For the short-term view, our membership numbers are holding steady through the Stay Safe at Home period. In spite of missing the Zanesville meeting, and we will miss the Marion event, we are all still members. As I write this, we would have been preparing to head to the Pittsburg Mid Central Regional event. Yet another shut-down victim. Let us all hope for an August event. Matt has told us about the feedback on the quality and quantity of the clinics Division 6 was presenting. I can't wait to get back to live clinics.

Active Members (end of the month):

April	164	April '19	175
March	163	March '19	180
February	168	February '19	181
January	168	January '19	179

Upcoming Expirations – Check your dates! Note: If you have questions about when your membership expires, check your magazine address label or contact Membership Chair Matt Goodman.

We have **four** memberships expiring in May.

New Members, Renewals and Re-Rails

(returning lapsed members)

Very pleased to report that **Fourteen** members renewed in April.

Even more important, let us welcome two NEW members to Division 6! Welcome to **Ken McDonnough** of Westerville. Ken is a returning member after a longer hiatus. He reports that retirement has allowed him to return to active modeling. He is a PRR fan. Also, Welcome to **Kerry Dobbins** of Mt. Liberty.

Other Stuff

- Have you changed your address or other membership information?
- Are you not getting emails from the division?
- Not sure when your membership expires (or if it already has)? Notify headquarters by email: nmrahq@aol.com

You can contact either the Buckeye Division membership chair, or the National Headquarters to give updates or get your questions answered:

National

Email: nmrahq@aol.com

Phone: 423-892-2846 (9am – 4:30pm)

Mail: NMRA, Inc.
P.O. Box 1328
Soddy Daisy, TN 37384-1328

Buckeye Division Membership Chair

Email:
MembershipChair@div6-mcr-nmra.org

Phone: 614-581-6552 (please leave a message)

Mail: Rick Brown
7274 Nightshade Drive
Westerville OH 43082



Don't Just Belong,
Participate!!
Super's Signal

Operations (Part 3)

Help Wanted – Employment Opportunities During an Operating Session

By Mike Wolf, MMR

In the first two installments of this series, I discussed what model railroad **operations** are and some design features you should consider incorporating into your layout to make operations possible. In this month's installment, I'll discuss some of the **employment opportunities** expected by those coming to an operating session.

The operators (or employees) of your railroad need a job. Otherwise, they'll just stand around talking at the socially unsafe distances. Sorry, I had to slide a COVID public service message in there – it's a new state law.

First up is likely the most obvious. We need **engineers** to control the trains. And we need **conductors** to direct their activities and keep the paperwork straight. Most crews tend to have the engineer work the throttle. The conductor determines the movements needed, obtaining clearance from the controller, setting the turnouts correctly, and coupling and uncoupling cars. As a side note, you can make the session more realistic if you ask your operators to take the time to allow the conductor to "walk" to the switch-stand or uncoupling lever location rather than just rocketing back and forth shuffling cars as fast as possible.

The engineer can also stand out of the way and follow hand signals from the conductor if your crews are so inclined. And if you have sound-equipped motive power, engineers should be using company appropriate whistles, horns and/or bell signals. I've included some common signals in Table 1. You can research the appropriate signals used by your prototype during the era you are modeling. In some cases, one person can do both jobs. On some of the more complicated switching assignments (or with newer operators), it's advisable to have two people assigned. Holding a throttle and sorting through a stack of cards or paperwork can easily task saturate a new operator. That leads to mistakes, accidents, or worse – frustration.

If you have a yard on your layout, you'll likely need a **yard switcher engineer** too. Most people call this job a Yardmaster. But on most real railroads, the **Yardmaster** is the director of activity in the yard. For complex yards, much like the engineer and conductor, two operators may

be advisable. One to run the switcher and one to help sort the cars, paperwork and/or plan the movements. It's easy to get task saturated and miss out on the "Big Picture". What the priorities are and which train/car needs to go out next. If you have a passenger terminal that involves shifting cars around, you'll likely need a yard switcher for that job too. For layouts with active staging yards or fiddle yards, you need a **Mole** or **Stage Manager**. He breaks down or assembles trains in staging. He may also position them for an active road crew to take charge of them.

If you have an engine terminal or change out motive power during your ops session, you'll likely want to include a **Hostler**. Sometimes called a **Roundhouse Foreman/Motive Power Manager**. In addition to shuttling locomotives in and out of the locomotive facility, they can also determine the correct locomotive(s) to use for the size and route of the train. I designed the West Valley Union as a division point (i.e. locos and crews due for servicing and/or swap out) and the hostler rarely gets a break during a 2.5 hour session. And everyone needs space on their layout to display their locomotive collection right?

Headlight (F0)	Ensure headlight is illuminated prior to any movement
Whistle or Horn (F2)	
Approaching a road crossing; Approaching locations where maintenance personnel are working; and Approaching and passing standing trains.	2 long blasts, 1 short blast, 1 long blast
Approaching passenger stations	1 long blast, 1 short blast
When standing, warning that train will start to move in a forward direction	2 short blasts
When standing, warning that train will start to move in a reverse direction	3 short blasts
Bell (F1)	
When passing over bridges and in tunnels; When approaching and passing over road crossings; When passing standing trains or cars on adjacent tracks; and While passing maintenance personnel	Activate bell

Table 1. Commonly Used Signals

That covers most of the **hands-on jobs** on the layout. Next, let's look at some of the other **hands-off** and **management positions** you may want to include in your operating

Operations – 3
Continued on page 7.

Continued: **Operation – 3**

session.

First up is the **Dispatcher**. The dispatcher controls the movement of trains on the railroad's main track(s). Depending on your control system (we'll discuss that in segment five of this series), the dispatcher will communicate with the conductor/engineer(s), Yardmaster, Motive Power Foreman, Chief Dispatcher, Tower Operators, and/or others to safely (and hopefully smoothly) sequence and direct trains on the mainline. He may perform his duties via written orders, control of signals and turnouts, and/or voice or radio commands. On some layouts, the Dispatcher is in a separate room or seated at a CDC panel.

Depending on your trackwork, the services of a **Tower Operator** may be useful to your operations. The tower operator generally controls a complex segment of trackwork and sequences trains through his/her area of control. Examples would be the trackwork entering or exiting a yard or a busy crossing (interlocking).

Some operating layouts also involve **Local Freight Agents** and a **Chief Clerk**. They prepare shipping paperwork and switch lists but I've found most layout owners perform these roles beforehand. If you have someone in your group who really likes filling out tax forms and other paperwork, lighten your load and pass those jobs to them.

On the management side of operations, some layouts include positions for **Chief Dispatcher, Trainmaster, Crew Caller, Traffic/Car Manager, General Freight or Passenger Manager**, etc. For most of those

jobs, the more general title of "Hey Owner, I've got an issue/question" usually applies. See Table 2 for a brief description of all these jobs.

Before concluding for this month, one aspect of layout design I forgot to include the last installment was place names. **Every location on your layout should have a name** – either formal (e.g. XYZ Tower, Gahanna siding) or informal (the stockyards). You can also use control blocks and mile markers. When issuing clearances or directions, the controller and the operator need to clearly and easily know where the train is cleared to operate. Signs on the layout or placards on the fascia are often used to designate location names. The need for this will become more apparent in the final segment of this series.

As you contemplate designing or improving the operating scheme used on your layout, consider the multitude of jobs possible. Of course, a layout in a spare bedroom won't be able to support 7 or 10 people AND the trains. But perhaps there is more than one role each person can hold during the session. Hostler, yardmaster, and yard crew for instance. Next month we will discuss some of the various car routing systems commonly used to provide realistic movement of cars around your modeled segment of the railroad. The following month, we'll finish up discussing some of the various ways to direct (or control) trains during an ops session. Hopefully, we'll be able to hold a virtual or actual meeting before that point and I'll present my clinic on the topic. Until then, I'm available on the Division Groups.io or at wvunion@gmail.com for any questions. Now go wash your hands, avoid touching your face, and stay safe!

Operations – 3
Continued on page 8.

ELECTION RESULTS

*Reported by Harry "Butch" Sage
Buckeye Division Elections Teller*

According to the Regulations of the Buckeye Division 6, upon closing of voting the ballots are counted and the results reported to the Buckeye Division 6 Clerk with copies sent to the other members of the Board and the candidates. The Buckeye Division 6 Clerk submits the results at the Annual Meeting of the Buckeye Division 6 in April for certification. The newly elected officers take over at the conclusion of the MCR Spring BOD meeting (this was recently changed).

The ballots were counted and the results were reported, as noted above, on March 8th. However, due to the current rules in effect regarding gatherings larger than 10 people both our April and May meetings have been cancelled, so the results have not yet been certified. So that we don't keep everybody in suspense, here are the results of the voting, pending certification by the BOD.

- Ballots received.....27
- Ballots voided 1
- Ballots counted.....26
- Superintendent: Matt Goodman 26
- Asst. Superintendent: Dexter Hill 26
- Clerk: Carter Jastram 26
- Paymaster: Jim Borcz 25



Job Title	Role
Hands on Operators	
Engineer	Runs the locomotive(s) and is responsible for the safe handling of the train under the direction of the conductor
Conductor	Determines how a train's work is accomplished and is responsible for the movement of the train over the road under the authority of the dispatcher
Brakeman/Flagman	Depending on the era, the arms and legs of the conductor. Also, responsible for protecting the rear and sometimes the head end of the train when stopped on the mainline
Yardmaster	Controls the work in the yard. Responsible for properly blocking cars and making up trains.
Yard Crew	Works under the direction of the yardmaster to accomplish the actual switching/blocking of cars
Roundhouse Foreman / Hostler	Responsible for the care and feeding of the locomotives and preparing proper ones for specific trains
Mole (Stage Manager)	Works in an active staging or fiddle yard and is responsible for breaking up arriving trains and assembling new trains and locos for handoff to "active" crews
Hands off Operators	
Dispatcher	Controls the movement of trains over the railroad's main track
Tower Operator	Controls the movements of trains through an interlocking plant. May also be a train order operator
Local Freight Agent	Responsible for the movement of cars to/from the railroad's customers in the town(s) under his care. May be combined with train order operator
Chief Clerk	Prepares the switch lists from waybills for crews to follow. Crews normally would not handle waybills if this position is used
Management Positions	
Chief Dispatcher	Responsible for coordinating various activities, personnel, and information to insure they all dovetail together seamlessly into specific trains with the correct number of cars, properly sized locomotives with crews assigned and ready when needed
Trainmaster	Management by walking about. Person knowledgeable about the railroad and authorized to make on-the-spot decisions to keep traffic flowing
Crew Caller	Tracks down crew members when they are needed to man trains
Transportation Planner	Develops the plan for daily/weekly/seasonal movement of trains over the railroad. The final work product may be reflected in the employee timetable or sequential lineup of trains to be run
General Freight and/or Passenger Agent	Responsible for developing the overall scheme of car and/or passenger train movements in support of the railroad's customers
Traffic Manager/Car Manager	Responsible for car loading, movement, prep and/or staging for a really large industry with multiple spots (i.e. a automobile plant) or a commodity (i.e. coal)

Table – 2 Employment Opportunities



The *Northern Express*: MCR Regional Convention 2021

Save the Dates: May 20-23, 2021



The Ambassador Center:

I-90 Exit 24 – 7794 Peach Street, Erie, Pennsylvania

- | | |
|--|---|
| <input type="checkbox"/> Clinics | <input type="checkbox"/> Prototype and Industrial Tours |
| <input type="checkbox"/> Contests | <input type="checkbox"/> General Interest Tours |
| <input type="checkbox"/> Model Railroads on Display | <input type="checkbox"/> Non-rail Activities |
| <input type="checkbox"/> Ops-Sessions | <input type="checkbox"/> Raffle |
| <input type="checkbox"/> Model Railroad Tours | <input type="checkbox"/> Saturday Night Banquet |
| <input type="checkbox"/> Company Store and White Elephant Sale | |

